



## Faculty/Staff News



Alain Brizard

**A L A I N BRIZARD**, assistant professor of physics, has been commissioned by the editors of *Reviews of*

*Modern Physics* (the most prestigious review journal in physics) to write a review paper on "The Foundations of Nonlinear Gyrokinetic Theory" with T.S. Hahm of Princeton University.



**MIKE DONOGHUE**, adjunct professor of journalism and mass communication, served as an invited discussion leader and facilitator concerning "Strategies for Secrecy" at the inaugural New England Freedom of Information Summit in Cambridge, Massachusetts on November 11 and 12. The two-day joint conference was attended by representatives of the top print and electronic news outlets and lawyers in the six-state region. It was sponsored by the New England Society of Newspaper Editors, the New England Newspaper Association and the New England Associated Press News Executives Association.



Mike Donoghue



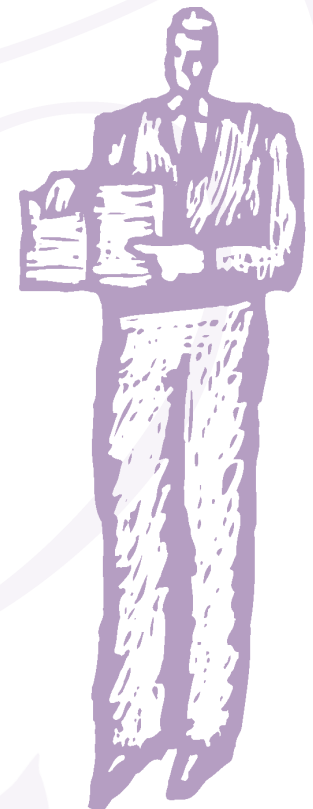
Associate Professor of Education **MARY BETH DOYLE** will be giving the keynote address, "Listen to Their Voices," for the Center on Autism and Related Disabilities (CARD) in Florida on January 14. This keynote is based upon a research study she co-authored that will appear in the next issue of the journal *Exceptional Children*. With the extensive creative and technical assistance of **JIM MILLARD**, senior instructional support specialist, Mary Beth was able to create a powerful multi-media presentation highlighting the perspectives of adults with intellectual disabilities regarding their experiences with paraprofessional assistance during their school years. On January 15 she will facilitate a session on "Friendship and Youth with Disabilities" at the same conference.

**WILL MENTOR**, associate professor of fine art, had a print in a show at the International Print Center in New York

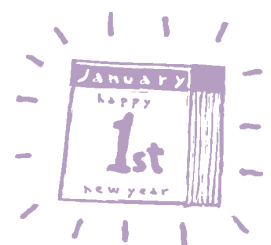


Will Mentor

from November 5 to December 23, 2004. He will have a one-person show in Boston at Mario Diacono Gallery at Ars Libre January 7 to January 28. As a Visiting Artist, Mentor delivered a lecture on his work and critiqued student work at Alfred University on November 30 and December 1.



**JOANNA ELLIS-MONAGHAN**, assistant professor of mathematics, and **GRETA PANGBORN**, assistant professor of computer science, received a grant from Vermont EPSCoR for a project using graph theoretical techniques to address computer chip layout problems. This grant includes support for **JAMEY LEWIS '07** to work on this project in summer 2005.



## News continued....

Research in African Literatures 35.4 has published Visiting Professor of French **MARY ANNE HARSH's** book review of Valerie Orlando's *Of Suffocated Hearts and Tortured Souls: Seeking Subjecthood through Madness in Francophone Women's Writing of Africa and the Caribbean*. A chapter entitled "The Grotesque in Roch Carrier's *La Guerre, Yes sir!*" will also appear in *Interdisciplinary and Cross-Cultural Works in North America* to be published by Peter Lang in January.



**NATHANIEL G. LEW**, Assistant Professor of Fine Arts-Music, presented a paper entitled "Through the Iron Looking-glass: Alan Bush and Socialist Realism in England" on November 11, 2004,

at the annual meeting of the American Musicological Society in Seattle.



**REV. JOE McLAUGHLIN**, S S E, associate professor of religious studies, will be giving a paper entitled "The making of a Spenserian network of forts/manors in early 17th-century Ulster"



Rev. Joe McLaughlin

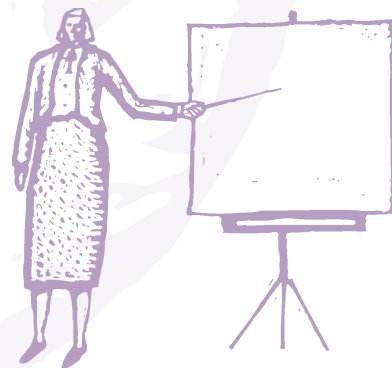
at the "Ireland in the Renaissance" interdisciplinary conference in Dublin on January 8, 2005. The conference is sponsored by Hampden-Sydney College, Cambridge University, and the Royal Society of Antiquities of Ireland.

NAFSA (Association of International Educators) Region XI (New England) celebrated its 50th Anniversary at its Regional Conference in Boston in November. **ALICE THAYER**, professor emerita of SIS, was presented its Distinguished Service Award with appreciation and gratitude for her devoted service to the region and to the promotion of the international education mission of NAFSA. She has been a presenter at state, regional and national workshops and conferences. She received an In-Service Training Grant at Stanford's Institute for Intercultural Communication. She was a Vermont state representative, a Regional COMSEC (Community Section) representative and an elected Regional Chair. She has served as a regional ATESL (Administrators & Teachers in English as a Second Language) rep. and was elected to the National ATESL Team and later to the ATESL Nominations Committee. At the present time, she is on the Archives Committee of Region XI.



**SUE TREADWELL**, director of the The Early Learning Center at Saint Michael's College, announced that the center has earned accreditation from the National Association for the Education of Young Children, the nation's leading organization of early childhood professionals, for the fourth time. NAEYC created its accreditation program in 1985 to set professional standards for early childhood education, and to help families identify high-quality child care and early education programs. To earn NAEYC's accreditation, a program conducts a self-study to determine how well it meets the standards. After necessary improvements are made, if needed, the program is observed by independent, professional validators, and then reviewed by a national panel. Programs are currently accredited by NAEYC for a five-year period. ■

# A B C



## SOCIAL SCIENCE RESEARCH CENTER ■ 2005 Seminar Series

Seminars will be held in the Farrell Room on Tuesdays from 12:00 p.m. to 1:00 p.m. unless otherwise specified.

**FEBRUARY 1****Paul Olsen**

“Parallels between the Lavender and Glass Ceilings”

**FEBRUARY 8****Roger Putzel**

“Drawing on Peer Evaluation Studies to Manage the Classroom”

**FEBRUARY 22****Jeffrey Ayres**

“Still the Continental Divide? Canada and the United States”

**MARCH 8****David Mindich**

“What Happens to Democracy When Under-40 Americans Are Tuned Out?”

**MARCH 29****Vincent Bolduc**

“Are Saint Michael’s students more religious than their peers at Saint Anselm, Stonehill, Merrimack, or Assumption? Results from the 2004 survey of 1,640 students.”

**APRIL 5****Bonalyn Nelson**

“Trouble in Paradise: Using Theories of Stigma and Impression Management to Understand and Repair Destination Image Following a Tourism Crisis”

**APRIL 19****Tara Natarajan**

“Sustainable Development and the Marginalized: The Centrality of Localization as a Counter in India”

# January Calendar

**TUESDAY, JANUARY 18**

12:00 p.m.

Saint Michael’s College *Faculty Colloquium Series in the Humanities* presents Professor **Mary Harsh**, visiting instructor in modern languages, speaking on “From Muse to Militant: Surreal Practices in the Works of Women Francophone Authors in Postmodern Times” in the **Farrell Room**.

4:00 p.m.

Saint Michael’s College *Centennial Celebration* presents **Fireside Chat: Remembering Dr. Marie Hénault** in the **Hoehl Welcome Center**. The Fireside Chat Series features the great teachers, humanitarians and artists who built the foundations of intellectual and spiritual life at Saint Michael’s College. **Carey Kaplan** remembers **Marie Hénault**, former professor of English.

**FRIDAY, JANUARY 21**

8:00 p.m.

Saint Michael’s College *Centennial Celebration* presents **Susan Summerfield**, college organist and professor of fine arts, in **Music Department Centennial Concert Series No. 3**, in the **Chapel**. The program includes works by Bach and Brahms among other traditional composers, and Lou Harrison works for both organ and harpsichord.

**TUESDAY, JANUARY 25**

12:00 p.m.

Saint Michael’s College *Faculty Colloquium Series in the Humanities* presents **Robert Niemi**, associate professor of English, speaking on “A New Kind of War Film: An Ideological Analysis of ‘Black Hawk Down’ and ‘We Were Soldiers’” in the **Farrell Room**.

JANUARY						
S	M	T	W	T	F	S
						1
2	3	4	5	6	7	8
9	10	11	12	13	14	15
16	17	18	19	20	21	22
23	24	25	26	27	28	29
30	31					

12:30p.m. to 5:30 p.m.

**Blood Drive** in **Alliot Student Center** multipurpose room (2nd floor). Pizzas and snacks. Presented by MOVE and the American Red Cross.

cont. ✍

# EVENTS

## Calendar continued....

### WEDNESDAY, JANUARY 26

7:00 p.m.

Saint Michael's College *Centennial Celebration* presents a celebration of **Shakespeare's Twelfth Night** with **Kenneth Rothwell**, University of Vermont emeritus professor of English, speaking on "Shakespeare's Twelfth Night" in the **McCarthy Arts Center**. **Joseph Hillyer '84** will then perform his own arrangements of songs from Shakespeare's Plays with a group of musicians and singers. Kenneth Rothwell co-founded the *Shakespeare on Film* newsletter, co-edited the book, *Shakespeare on Screen: An International Filmography and Videography* (1990), and is the author of *A History of Shakespeare on Screen: A Century of Film and Television* (1999, second edition 2004).

### THURSDAY, JANUARY 27

7:00 p.m.

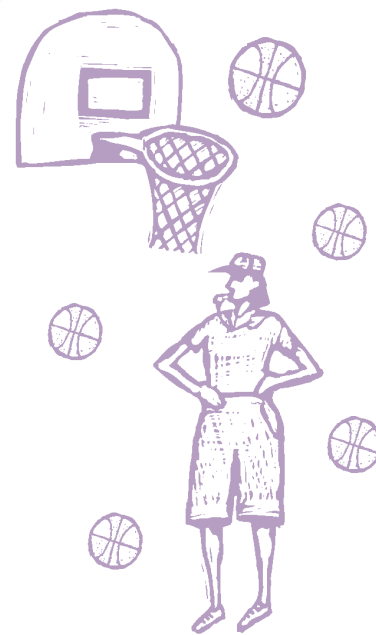
Saint Michael's College *Centennial Celebration* presents a continuation of the celebration of **Shakespeare's Twelfth Night** with a talk by **Ralph Cohen**, founder of the Shenandoah Shakespeare Express and professor of English and theater at James Madison University, in the **McCarthy Arts Center**. Cohen will discuss the performance philosophy of Shenandoah Shakespeare Express, which performed *Twelfth Night* at Saint Michael's in November. The talk comes just after *Twelfth Night* in the liturgical calendar and anticipates the performance of *Twelfth Night* by the Aquila Theater Company at Saint Michael's April 10.

### MONDAY, JANUARY 31

3:00 p.m.

**Martin Luther King Convocation** with speaker/performer **Jim Lucas** in the **Chapel**. Lucas is nationally recognized for his recitations and interpretive readings portraying the life and times of the Reverend Dr. Martin Luther King Jr. His resemblance to and interpretation of Dr. King has been called "remarkable," "awe-inspiring," "uncanny," and "soulful." Lucas participated in the Civil Rights Movement of the 1960s in his hometown of Lake Providence, Louisiana, and became inspired in the 1980s to learn King's speeches so that he could perpetuate King's legacy effectively. The program will also include poetry, a piano performance and singing by **The New Alpha Baptist Church Choir**.

JANUARY						
S	M	T	W	T	F	S
						1
2	3	4	5	6	7	8
9	10	11	12	13	14	15
16	17	18	19	20	21	22
23	24	25	26	27	28	29
30	31					



*Campus Currents* is published by the Office of Public Relations for the Saint Michael's College Community.

To submit your news to *Campus Currents*, write to [ccrawford@smcvt.edu](mailto:ccrawford@smcvt.edu).

Editor: Caroline Crawford, Director of Publications  
Director of Public Relations: Buff Lindau

